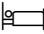



# 17 The Crescent, Mosman.

5  3  1 

Property Information

Property ID

2P9757

Property Type

House

## Exquisite Family Haven In the Heart of Mosman Village

Claiming a privileged Parkside position, this superb residence was fully renovated in partnership with 'Heather Buttrose & Associates' to deliver a beautiful easy-living retreat.

Beyond the timeless Federation facade, bright interiors reveal elegant spaces with contemporary style and functionality. There's seamless outdoor connection to a stunning private alfresco oasis certain to see countless weekends entertaining family and friends.

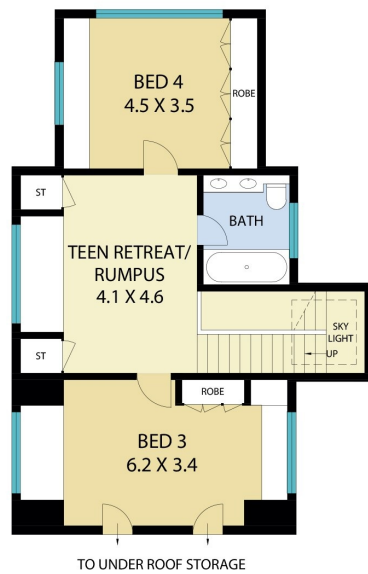
The property is opposite Memorial Park & Allen Border Oval, a level stroll to city buses, shops, lively cafes and dining.

- Lovely street appeal with fenced front garden and character facade
- Welcoming entrance hallway exudes an immediate sense of space
- Inviting open living zone with charming slow combustion fireplace
- Expansive glass sliding doors give way to automated pergola deck
- Easycare lawn, saltwater gas heated pool amidst private gardens
- Deluxe kitchen, premium integrated appliances, Vintec wine fridge
- Stunning master ensuite offers underfloor heating and rain shower
- Home office, versatile studio/fourth bedroom, upstairs sitting room
- Scandinavian Douglas Fir floorboards, zoned ducted air conditioning
- Moments to sought-after schools, Taronga Zoo and Balmoral Beach

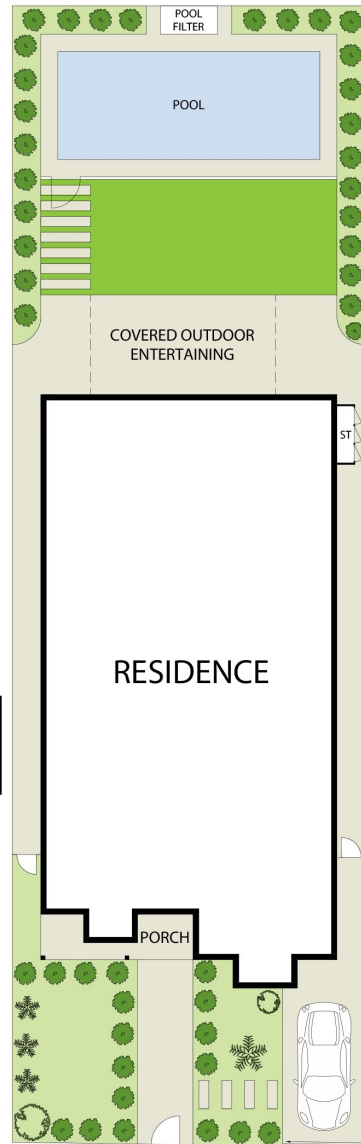
Disclaimer: All information contained herewith, including but not limited to the general property description, price and the address, is provided to Belle Property by third parties. We have obtained this information from sources we believe to be reliable; however, we cannot guarantee its accuracy. The information contained herewith should not be relied upon and you should make your own enquiries and seek advice in respect of this property or any property on this website.



GROUND FLOOR



FIRST FLOOR



SITE PLAN

**17 The Crescent, Mosman**

All information contained herein is gathered from sources we believe to be reliable. We cannot however guarantee its accuracy and interested parties should make and rely on their own enquiries.

